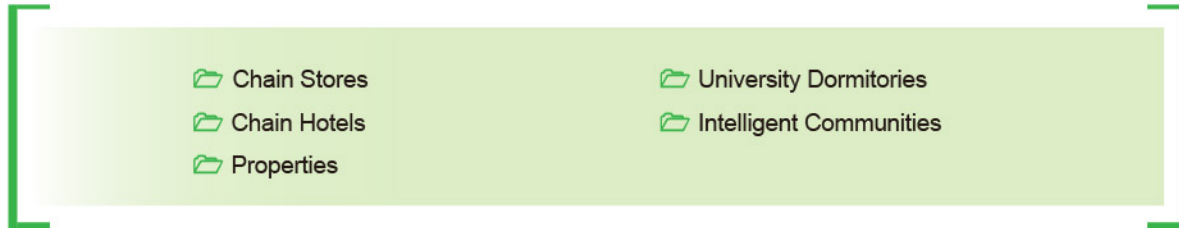
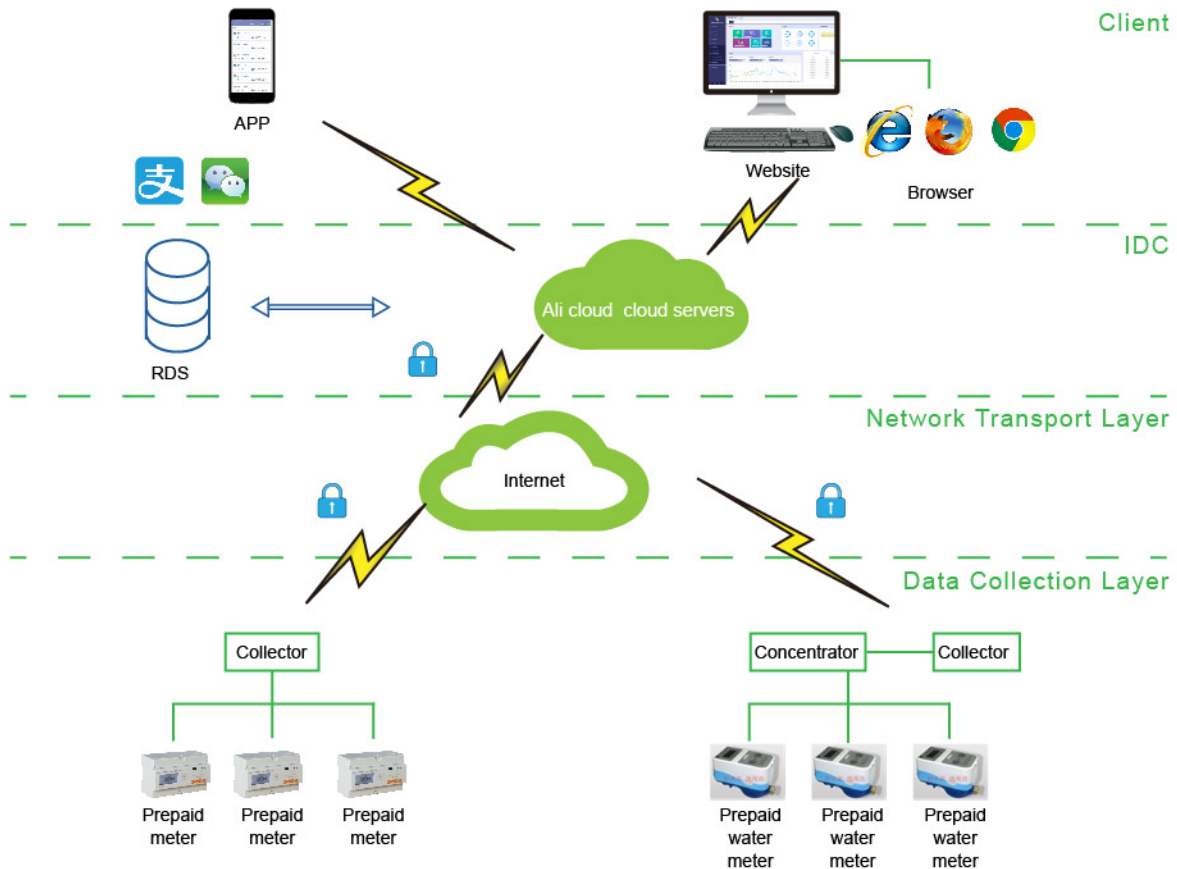


Prepayment Cloud Platform

➤ 1.Application



➤ 2.Structure



➤ 3.Main Functions

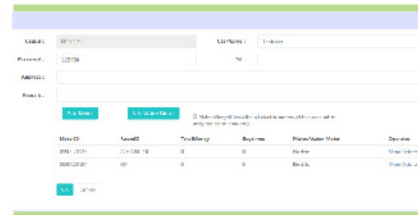
Remote Data Monitoring, Remote Deposit

The data is uploaded to the cloud platform in real-time through gateway, unit price can be set on each electricity meter or water meter.



Cloud Deployment

Software installation, upgrade and maintenance are easy.

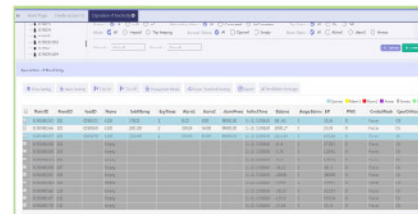


Balance Warning

When the balance is insufficient, the system will remind the users to recharge in time by SMS or E-mail.

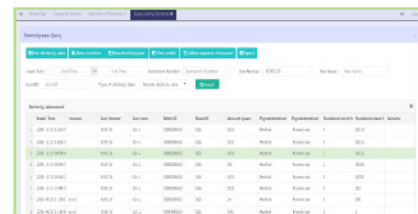
Remote Control

According to the management requirements, the user can control the electricity meter and water meter within his authority. For example, control the power switch and water meter valve, set the price and the alarm parameters, etc.



Energy Report

The system can provide various reports, such as energy consumption report and financial report, etc.

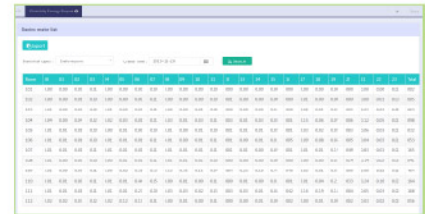


Online Payment

The users can check balance and recharge online.

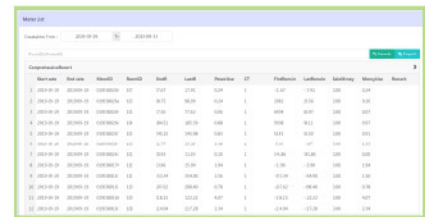
Third Party Interface API

The system can provide interface(API or SDK) for a third-party platform.



Application in Dormitories

The system can support dormitory management, such as timing control, unsafe load identification,ect.



Historical Record and Report

All alarm information, remote control and recharge operation are recorded in the logs for users to query.

➤ 4.Product Selection

No.	Name	Specifications
1	Smart gateway	ANet-2E8S1 2* 10M/100M RJ45 8*RS485 1*4G
2	Smart gateway	AF-GSM400-4GY 1*RS485 1*4G 24V DC power supply
3	Three-phase prepaid meter	ADL300-EY
4	Single-phase prepaid meter	ADL100-EY
5	Multi-circuit prepaid meter	ADF300L
6	Switching power supply	KDYA-DG30-24K output DC 24V
7	Data acquisition box	400mm*500mm*200mm